

iTest-DC

DSP Control Software

Front End Software Platform for Utilizing ADx and Procyon Systems

Test automation tool for changing control parameters and monitoring measurement signals. In addition to basic functionality, it has many tools for complete application creation.

Modern GUI Creation

Easily create modern looking GUI's with excellent usability and visibility



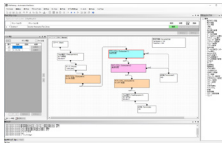
Easy Application Creation

Easily build high functionality applications. Also supports Python Scripting to operate GUI controls and change control parameters.



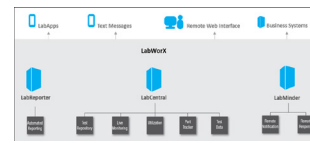
Test Automation

Build automated tests using scripts and scheduling features with optional "Testing Pack" automated test creation feature.



Link to Server PC

Link with server application software (LabWorX), to centrally manage equipment, test data, & automatically generate reports.



PC Recommended Specs :

- 2.1 GHz Core i7 PC minimum
- 230 GB Hard Drive
- Ethernet port
- Windows 10 Pro 64bit
- 16 GB RAM
- USB 2.0 port

Americas

A&D Technology, Inc.
Ann Arbor, MI USA
+1 (734) 973-1111
www.AandTEch.com

Europe

A&D Europe, GmbH
Grieseim, Germany
+49 (0) 6155-605-250
www.AandDEurope.com

A&D Europe - UK Branch
Abingdon, Oxon, UK
+44 (0) 1235-550-420
www.AandDEurope.com

Asia

A&D Technology Trading Co.
Shanghai, China
+86 (0) 21-3393-2340
www.AandTEch.com

A&D Company, Ltd.
Tokyo, Japan
+81 (0) 3-5391-2753
www.AandD.co.jp

Australia

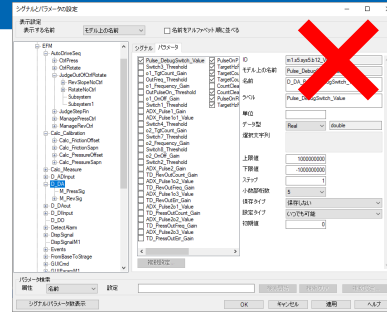
A&D Australasia Pty Ltd.
Kensington, VIC, Australia
+61 (0) 3-9372-1522
www.andaustralasia.com.au

VirtualDSPConsole Replacement

iTest-DC replaces older VirtualDSPConsole(Vcon) tools and has the following improved features

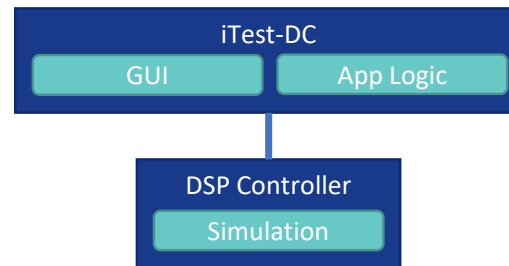
No need to preselect signals and parameters

Vcon required preselection of signals and parameters to use in GUI, iTEST-DC does not require this



Application logic can be separate from simulation model

In Vcon the application logic had to be written into Simulink Model. With iTest-DC it can be done in iTest-DC and separated from Simulink Model



The GUI can be edited at any time

In Vcon the simulation had to be stopped to change or update the GUI. But iTest-DC allows user to do this while simulation is running



Americas

A&D Technology, Inc.
Ann Arbor, MI USA
+1 (734) 973-1111
www.AandTEch.com

Europe

A&D Europe, GmbH
Grieseim, Germany
+49 (0) 6155-605-250
www.AandTEurope.com

A&D Europe - UK Branch
Abingdon, Oxon, UK
+44 (0) 1235-550-420
www.AandTEurope.com

Asia

A&D Technology Trading Co.
Shanghai, China
+86 (0) 21-3393-2340
www.AandTEch.com

A&D Company, Ltd.
Tokyo, Japan
+81 (0) 3-5391-2753
www.AandTEch.jp

Australia

A&D Australasia Pty Ltd.
Kensington, VIC, Australia
+61 (0) 3-9372-1522
www.andaustralasia.com.au

